

WALL-ACE 1.1 HELP CONTENTS

Wall-Ace 1.1 Copyright © 1996 Sidney D. Peters All Rights Reserved

Introduction

Getting Started

Operation

Reference

Revision History

Why Wall-Ace?

Credits

License Agreement

Registration And Benefits

Comments And Suggestions

Contacting The Author

WALL-ACE 1.1 HELP CONTENTS

Wall-Ace 1.1 Copyright © 1996 Sidney D. Peters All Rights Reserved

Introduction

Welcome

A Word About Shareware

What's New

Introduction To **Wall-Ace**

Getting Started

Operation

Reference

Revision History

Why Wall-Ace?

Credits

License Agreement

Registration And Benefits

Comments And Suggestions

Contacting The Author

WALL-ACE 1.1 HELP CONTENTS

Wall-Ace 1.1 Copyright © 1996 Sidney D. Peters All Rights Reserved

Introduction

Getting Started

System Requirements

Files Included

Installation And Setup

Operation

Reference

Revision History

Why Wall-Ace?

Credits

License Agreement

Registration And Benefits

Comments And Suggestions

Contacting The Author

WALL-ACE 1.1 HELP CONTENTS

Wall-Ace 1.1 Copyright © 1996 Sidney D. Peters All Rights Reserved

Introduction

Getting Started

Operation

Introduction

Using **Wall-Ace**

Starting **Wall-Ace**

The **Wall-Ace** Command Line

Exiting **Wall-Ace**

Using The **Wall-Ace** General Options

The Wallpaper Directory

Adding Wallpaper Files Automatically

Using Wallpaper Weighting

Methods Of Selecting Wallpaper

Using The Wallpaper Timer

Editing The Wallpaper List

The **Wall-Ace** Initialization File

The Win.Ini File

Registering **Wall-Ace**

Reference

Revision History

Why Wall-Ace?

Credits

License Agreement

Registration And Benefits

Comments And Suggestions

Contacting The Author

WALL-ACE 1.1 HELP CONTENTS

Wall-Ace 1.1 Copyright © 1996 Sidney D. Peters All Rights Reserved

Introduction

Getting Started

Operation

Reference

Introduction

The **Wall-Ace** Main Window

The Preferences Window

The Select Sound File Window

The Edit Wallpaper File List Window

The Select Wallpaper Directory Window

The Edit Weight Window

The About Window

The Registration Window

Revision History

Why Wall-Ace?

Credits

License Agreement

Registration And Benefits

Comments And Suggestions

Contacting The Author

WELCOME!

Welcome, and thanks for trying **Wall-Ace**. We're confident that you'll be favorably impressed with this outstanding product.

Wall-Ace is a Windows wallpaper manager with a difference. While there are several utilities available to change your Windows wallpaper, some of them quite good (and some not so good), none of them incorporates all of **Wall-Ace's** features, and some of **Wall-Ace's** capabilities are not found in any other product that we are aware of.

Wall-Ace has been designed from the ground up to be easy to use, and we believe you will find it to be intuitive and flexible. We sincerely hope that it will meet your needs, and that you will be a happy and satisfied user of **Wall-Ace**. Your recommendation is our greatest advertisement. If you like **Wall-Ace**, please tell others; if you don't like it, please tell us! At the end of this manual, you will find a [comment form](#). We hope you'll take a moment to let us know your thoughts about **Wall-Ace**, whether good or bad. We appreciate your comments and suggestions, and they will receive consideration in the development of future versions of **Wall-Ace**.

Of course, we also hope that you will be motivated to register **Wall-Ace**. **Wall-Ace** is distributed as shareware, which gives you the opportunity to try before you buy. **Wall-Ace** has a very reasonable registration fee, and we have included a form to make registration as easy and convenient as possible. Please see the section titled [Registration And Benefits](#) for information on how to register **Wall-Ace**.

A WORD ABOUT SHAREWARE

Wall-Ace is shareware, not free software. Shareware is not a type of software, but rather a method of distributing software. Shareware is distributed by authors through internet archive sites, bulletin boards, on-line services, disk vendors, and copies passed among friends and between colleagues. Shareware remains copyrighted, commercial software, which you are allowed to evaluate before paying for. However, shareware offers several distinct advantages over retail software.

Users of shareware can interact directly with the program's author, and shareware authors can in turn respond to user requests and concerns in a more timely fashion, and can more quickly release updated versions, than can retail software publishers.

Traditionally, shareware has been much less expensive than retail software, because you pay for the software, and not for the expensive advertising, packaging, distribution and retail markups which account for the lion's share of the cost of most retail software (after development costs).

The enormous costs involved in launching a new software product in the traditional retail channel prevent many independent authors and small companies from developing and promoting their ideas. The shareware distribution method allows these same authors and companies to produce and distribute quality products, and accounts for many programs on the market today which would otherwise have never become available.

Shareware (sometimes referred to as user supported software) has gained phenomenal popularity and experienced wide-spread growth, and now plays a major role in the software industry. Even so, shareware can resist market trends, filling smaller markets which are not lucrative enough to interest larger companies, and providing useful products which are simply not available through retail channels.

It has been said that you should not trust software which does not trust you. Shareware has helped to eliminate the annoying and cumbersome copy protection schemes with which companies sometimes burden their products because they simply don't trust their users. Shareware authors, on the other hand, freely distribute their products because they believe that users are honest enough to register the programs they use. In fact the very nature of shareware distribution is one of trust.

Perhaps the greatest difference between shareware and retail software is shareware's try-before-you-buy approach, which makes fitting your needs much easier. Shareware allows you to evaluate a program in its actual operating environment on your own system, for a reasonable period of time, without cost. This enables you to determine the suitability, quality, and usefulness of a program before you buy.

In fact, shareware has the ultimate money-back guarantee -- if you don't use the product, you don't pay for it! If, after evaluating a product you decide not to continue using it, you simply discard it. If, on the other hand, you do continue to use it, then, and only then do you pay for it. Registration of shareware products, in addition to being required, also provides the incentive for programmers to continue to produce quality software.

If you think this try-before-you-buy approach sounds like an ideal way to make your purchasing decisions, you're right! But it can only work with your support. It is your willingness to register and pay for the shareware programs you use which allows shareware authors to support and continue to develop high quality products. The continued availability of quality shareware products depends on the honesty of you, the user.

If shareware works, then everyone will benefit. Please show your support for shareware by registering those programs you use, and by passing them on to others. Shareware is kept alive by YOUR support!

WHAT'S NEW

Wall-Ace 1.1 has quite a few new features:

- A Hide Icon option has been added. If active, when **Wall-Ace** is minimized, its icon is invisible. To reactivate the program, simply run **Wall-Ace** again; instead of a second copy being run, the first instance will be reactivated.
- All automatic selection methods now ignore wallpapers whose weight is zero, allowing wallpapers to be in the wallpaper list, yet never be chosen by automatic selection. They may still be chosen by direct selection.
- The Random selection method has been renamed Random Cyclic, and a new selection method named Random has been added. The new Random selection generates weighted random selections from all enabled (weight > 0) wallpapers, without regard to their count. The newly named Random Cyclic selection, as before, generates random selections only from available (count > 0) wallpapers, and resets the counts when all have reached zero, in cyclic fashion. Hence the new name.
- The way in which wallpapers are chosen with the Random Cyclic (formerly called Random) selection method has been improved. Previously, the wallpaper was chosen randomly from all available wallpapers with an even distribution (unweighted), i.e. all wallpapers with count > 0 had an equal probability of selection regardless of their count. Wallpapers with greater weights simply appeared a greater number of times within the cycle, but without greater probability of selection at any change. The selection is now chosen randomly from all available wallpapers with a weighted distribution, i.e. those with greater counts have a greater probability of selection at each change.
- **Wall-Ace** now has the ability to play user selected .wav sound files. A different sound may be played when the wallpaper is changed manually, when it is changed automatically, or when the selection cycle repeats.
- The Wallpaper Directory selection panel has been moved from the Preferences window to the Edit Wallpaper File List window. This physical arrangement coincides more closely with the logical structure, and makes setup more straight forward. In addition, it provides more space in the Preferences window for the added Sound Options panel.
- The alt-hotkeys in the Preferences window have been slightly modified to accommodate the changes and additions.
- An item titled '(None)' has been added to the top of the list in the Current Wallpaper list box in the Main window to allow setting the Windows wallpaper to none.
- Previously, if the Windows wallpaper that was current when **Wall-Ace** was started, as reported by win.ini, was not in the wallpaper list, the current entry in the Current Wallpaper list box in the Main window was empty. Now, the current wallpaper, if it is not in the wallpaper list, is added to the end of the list in the Current Wallpaper list box and displayed in the Current Wallpaper list box. It remains a valid entry until **Wall-Ace** is exited, and may be manually selected even after other wallpapers have been selected.
- Previously, if the Wallpaper Directory was changed and then the Preferences (now Edit Wallpaper File List) Cancel button was pressed, the Wallpaper Directory change was not cancelled, but remained in effect. Fixed.
- Previously, if **Wall-Ace** was minimized when exited, the main window position was incorrectly saved as the position of the minimized icon, and with Windows 95 caused an overflow error. Fixed.
- Since the wallace.txt file contained the same information as the wallace.hlp file, the text file has been removed and replaced by a readme.txt file.

INTRODUCTION TO WALL-ACE

Wall-Ace is a Windows wallpaper manager which allows you to change your wallpaper on command whenever you wish, or to have your wallpaper changed automatically at timed intervals or each time Windows starts. You can choose the wallpaper you wish to have displayed directly from a list of wallpapers conveniently accessible in the main window, or you can have **Wall-Ace** select new wallpapers from your wallpaper list either randomly or sequentially.

Wall-Ace brings together abilities not found together in any other single utility, as well as capabilities not found anywhere else. Some of **Wall-Ace**'s unique features are:

- can be run either full screen, or quietly from the command line. In full screen mode, **Wall-Ace** can optionally change wallpaper when started, and can optionally exit after the first wallpaper change occurs. In command line mode, **Wall-Ace** starts, changes the wallpaper, and exits, all without appearing on the screen.
- combines a user specified wallpaper directory, along with user selected wallpaper files from any directory on your system, into a single easy to use wallpaper list.
- optionally, can automatically add to your wallpaper list any new wallpaper files which have appeared in your wallpaper directory since the last time **Wall-Ace** was run.
- allows you to assign to each wallpaper in your list a weighting, which is the number of times it will appear in random selection before the cycle is complete, thus allowing wallpapers to appear more or less frequently, as compared to other wallpapers.

Here are some additional features of **Wall-Ace**:

- works with all standard Windows bitmap files (including run length encoded [RLE] files) which have a .bmp extension.
- can select wallpapers from directories anywhere on your system, not just your WINDOWS directory.
- any wallpaper in your list can be immediately displayed by selecting it directly from the wallpaper list conveniently available in the main window.
- new wallpapers can be chosen either randomly or sequentially from your wallpaper list.
- a new wallpaper can be automatically selected at timed intervals, as well as each time **Wall-Ace** runs.
- accumulated time within the current interval can be saved when **Wall-Ace** exits, and the interval resumed when **Wall-Ace** next runs.
- quick access to **Wall-Ace**'s secondary windows via command buttons in the main window.
- easy and flexible configuration via Preferences window.
- easy addition and editing of wallpapers in your wallpaper list.
- individual tile/center settings for each wallpaper in your list.
- added wallpapers can be automatically given a tile or center setting, or can have the tile/center setting chosen automatically based on the wallpaper file's size.
- **Wall-Ace** is well-behaved -- it doesn't modify your hard drive or system files, or litter your hard drive with miscellaneous files.

SYSTEM REQUIREMENTS

Wall-Ace runs under either Windows 3.1x, Windows For Workgroups 3.1x, or Windows 95, and requires the Visual Basic run-time file, vbrun300.dll.

FILES INCLUDED

The following files are included in the archive for this release of **Wall-Ace**:

wallace.exe	the Wall-Ace program file.
wallace.hlp	the on-line help file.
readme.txt	introduction and quick start instructions.
license.txt	Wall-Ace license and distribution guidelines.
orderfrm.txt	Wall-Ace order form.
beep.wav	a sound file
drip.wav	a sound file
boing.wav	a sound file
spaceage.wav	a sound file
gametime.wav	a sound file
spin.vbx	provides additional program functionality.
threed.vbx	provides additional program functionality.
file_id.diz	a short program description for BBSs.

INSTALLATION AND SETUP

New Installation

After extracting the included files from the archive, copy wallace.exe, wallace.hlp, the sound files (.wav), and the text files (.txt) to any directory in which you normally place executable Windows utilities. (The text files may be placed in a corresponding documentation directory, and the sound files may be placed in another location in which you normally keep sound files, but the files wallace.exe and wallace.hlp should be kept together.)

The spin.vbx and threed.vbx files are Visual Basic files which should be placed in your WINDOWS\SYSTEM directory. These files are used by certain other Visual Basic programs as well, so you may already have copies of them in your WINDOWS\SYSTEM directory. If so, don't copy these files over top of the ones you already have; instead simply discard them.

The file_id.diz file exists only to provide a short description of the program to BBSs, and may be discarded.

In addition to the above files, the file vbrun300.dll must be in your WINDOWS\SYSTEM directory in order for **Wall-Ace** to run. This is the Visual Basic runtime file required by all Visual Basic 3.0 programs. Following Microsoft recommendations, this file is not included, as it is a large file which would substantially increase the size of the archive. Since it is required by all Visual Basic programs, chances are very good that you already have this file in your WINDOWS\SYSTEM directory, but if not, it may be downloaded separately from most BBSs and internet archive sites.

Once the files have been placed in their proper directories, simply create an icon for **Wall-Ace** in any group you choose, and installation is complete. You may wish to create an icon for **Wall-Ace** in your startup group in order to have **Wall-Ace** run each time Windows starts. See the topic Using Wall-Ace in the section OPERATION for more information.

When **Wall-Ace** is run for the first time, (or whenever its .ini file cannot be found), it will create its initialization file, wallace.ini, with default values. This is the **ONLY** additional file that **Wall-Ace** will add to your system! Normally, the .ini file is created in the same directory in which wallace.exe resides (see the topic The Wall-Ace Initialization File in the OPERATION section for more information).

Upgrade Installation

After extracting the included files from the archive, copy wallace.exe, wallace.hlp, and the text files (.txt) over top of the existing files from your previous version. The old wallace.txt file may be discarded, as it has been replaced by the readme.txt file.

Copy the sound files (.wav) to the same directory as your wallace.exe file, or to another location in which you normally keep sound files.

The spin.vbx and threed.vbx files from the archive may be discarded, since they should already be in your WINDOWS\SYSTEM directory from your previous version.

The file_id.diz file exists only to provide a short description of the program to BBSs, and may be discarded.

When **Wall-Ace** is run for the first time, it will update your wallace.ini file, preserving all your previous settings and wallpapers. If your wallace.ini file cannot be found, **Wall-Ace** will create a new initialization file with default values.

OPERATION

In this section we discuss several topics, which together describe the various ways of using **Wall-Ace**. The section titled Reference provides a reference to all the **Wall-Ace** windows and controls.

The topics in this section are:

- Using **Wall-Ace**
- Starting **Wall-Ace**
- The **Wall-Ace** Command Line
- Exiting **Wall-Ace**
- Using The **Wall-Ace** General Options
- The Wallpaper Directory
- Adding Wallpaper Files Automatically
- Using Wallpaper Weighting
- Methods Of Selecting Wallpaper
- Using The Wallpaper Timer
- Editing The Wallpaper List
- The **Wall-Ace** Initialization File
- The Win.Ini File
- Registering **Wall-Ace**

Using Wall-Ace

The most common method of using **Wall-Ace** is to place a **Wall-Ace** icon in your startup group to have it begin running each time you start Windows, and to configure it to automatically change your wallpaper at timed intervals (see the topic [Using The Wallpaper Timer](#) in this section). When placing a **Wall-Ace** icon in your startup group, you may wish to configure it to start minimized.

Alternatively, you may wish to start **Wall-Ace** manually (see the topic [Starting Wall-Ace](#) in this section), rather than have it run each time Windows starts. This may be accomplished by placing a **Wall-Ace** icon in a Windows group of your choice. You may also wish to start **Wall-Ace** each time you change wallpaper, rather than have it remain running in the background, and you may even wish to have **Wall-Ace** exit immediately after changing the wallpaper (see the topic [Using The Wall-Ace General Options](#) in this section).

You can configure **Wall-Ace** to change wallpaper only on your command, or you can have **Wall-Ace** change wallpaper automatically, either at timed intervals as mentioned above, or immediately when it begins running (see the topics [Using The Wall-Ace General Options](#), and [The Wall-Ace Command Line](#) in this section).

Starting Wall-Ace

To start **Wall-Ace**, simply click the **Wall-Ace** icon. Depending on whether or not you have given your **Wall-Ace** icon any command line arguments, **Wall-Ace** may run either in full-screen mode, or in command-line mode. In full-screen mode, **Wall-Ace** displays its main window (or its icon, if it was started minimized) and waits for your commands or events. In command-line mode, **Wall-Ace** starts, performs the requested operation, and exits without displaying its window. See the topic [The **Wall-Ace** Command Line](#) in this section for more information.

When **Wall-Ace** starts, it configures itself according to information in its initialization file. See the topic [The **Wall-Ace** Initialization File](#) in this section for more information.

Wall-Ace may be configured to change the wallpaper as soon as it starts. This may be done in two different ways. For more information, see the topics [The **Wall-Ace** Command Line](#), and [Using The **Wall-Ace** General Options](#) in this section.

The Wall-Ace Command Line

Wall-Ace can accept command line arguments to alter the way in which it operates. For option arguments, note that **Wall-Ace** accepts either the DOS style switch character '/', or the UNIX style option character '-', to introduce them.

Command line arguments may or may not cause **Wall-Ace** to run in command line mode. When run in command-line mode, **Wall-Ace** starts, performs the requested operation, and exits. Its main window never appears on the screen.

This version of **Wall-Ace** recognizes only one command line argument, the Quiet (or Quick change) option, /q. When run with this option, **Wall-Ace** starts, changes the wallpaper according to the selection method chosen in Preferences, and exits quietly without displaying its window.

This is useful when you wish to have **Wall-Ace** automatically change your wallpaper at certain times (for example, each time Windows starts), and manually on your command at other times, without having **Wall-Ace** remain running in the background in between.

As an example, suppose you wish to periodically run **Wall-Ace** manually to change wallpaper on your command, yet still wish to have it change the wallpaper automatically each time Windows starts. To do this, place an icon for **Wall-Ace** in your startup group with '/q' on the command line. This will make **Wall-Ace** change the wallpaper each time Windows starts, and exit quietly. Now place another **Wall-Ace** icon in a different group with an empty command line, from which you can run **Wall-Ace** manually.

Exiting Wall-Ace

Wall-Ace may be terminated in any of the following ways: choosing Exit from the File menu, pressing the Exit command button in the main window, double-clicking the control-box in the main window, choosing Close from the system menu (the control-box) in the main window, terminating **Wall-Ace** from your task manager, or quitting Windows.

Wall-Ace may also exit immediately after changing the wallpaper, if the Exit After First Change option is true. **Wall-Ace** will only exit if the wallpaper change occurs due to pressing the Change button in the main window (or choosing Change Wallpaper from the File menu), or as a result of a timed change or the Change On Startup option, but not as a result of a direct wallpaper selection in the Current Wallpaper list box in the main window.

When closed in any of these ways, **Wall-Ace** may, depending on settings in Preferences, save certain information to its initialization file before terminating. If the Cumulative Time option is true, **Wall-Ace** will save the elapsed time in the wallpaper timer's current time interval (see the topic [Using The Wallpaper Timer](#) in this section for more information). Also, if the Save Window Positions option is true, **Wall-Ace** will save the current positions of its windows.

Using The Wall-Ace General Options

Wall-Ace provides several general options to allow you to configure it to work the way you want it to. The general options settings are found in the Preferences window, which is accessed from the main window either by choosing Preferences... from the Options menu, or by pressing the Preferences command button.

The Change On Startup option, when true, causes **Wall-Ace** to change the wallpaper as soon as it starts running. The new wallpaper is chosen according to the Selection Method set in Preferences, and the wallpaper timer is reset. The Cumulative Time option has no effect when Change On Startup is true, since the restored time is immediately reset when the wallpaper is changed as **Wall-Ace** begins running.

The Exit After First Change option, when true, causes **Wall-Ace** to exit immediately after the wallpaper is changed due to pressing the Change button in the main window (or choosing Change Wallpaper from the File menu), or as a result of a timed change or the Change On Startup option, but not as a result of a direct wallpaper selection in the Current Wallpaper list box in the main window.

The Exit After First Change and Change On Startup options should not be used together, since if both options are enabled then each time **Wall-Ace** runs it will start, immediately change the wallpaper, and exit. If this is what you want, you should use the /q command line option instead (see the topic The Wall-Ace Command Line in this section). If both options are enabled, the **Wall-Ace** window will not appear, and you will be unable to access the Preferences window to change any settings unless you first edit (or delete) the wallace.ini file and manually set either or both of these options to false. The Exit After First Change option, (which may be removed in a future release), exists only for compatibility with certain other utilities, in which it was implemented in an attempt to work around the lack of a command line switch, such as **Wall-Ace** DOES have.

The Save Window Positions option, when true, causes **Wall-Ace** to save the current window positions when it exits, and to restore the saved positions when it starts, so you can have **Wall-Ace** always start in a position of your choice.

The Hide Icon option, when true, will cause the **Wall-Ace** icon to be invisible when **Wall-Ace** is minimized. In order to restore the **Wall-Ace** window, simply run the program again. Instead of a new copy of the program, the previous instance will be restored.

The Wallpaper Directory

Wall-Ace allows your custom wallpaper list to contain wallpaper files which may reside in any, or many, directories on your system. What, then is the purpose of the wallpaper directory?

Simply put, the wallpaper directory enables one of **Wall-Ace**'s most interesting features -- the automatic addition of new wallpaper files to your wallpaper list. See the topic [Adding Wallpaper Files Automatically](#) in this section for information on how to use this feature.

In addition, many users find it convenient to keep all of their bitmap (.bmp) files which they use for wallpaper together in a single directory other than their WINDOWS directory, both to avoid clogging the WINDOWS directory, and as an aid to organization.

The wallpaper directory can be changed from the [Edit Wallpaper File List](#) window, either by choosing the Browse command button, or by entering the directory path directly into the Wallpaper Directory text box.

Adding Wallpaper Files Automatically

Suppose you frequently preview many new image files, some of which you desire to use for wallpaper. After converting (if necessary) the files to bmp format (the only format which Windows can use for wallpaper), all you need do is move the bitmap files into your wallpaper directory. If you have enabled the Auto Add feature, **Wall-Ace** will automatically add these new files to your wallpaper list the next time it is run, saving you the need to manually edit your wallpaper list each time you add some new wallpapers.

This is how it works. Each time **Wall-Ace** starts, it checks the Auto Add Enable option. If set, **Wall-Ace** scans your wallpaper directory and adds to your wallpaper list each bitmap (.bmp) file found in the directory which is not already in the list.

The tile/center attribute of added files is determined by the three option switches in the Auto Add Options panel of Preferences. If the Tile option is set, added files will have the tile attribute; if the Center option is set, added files will have the center attribute. If the Auto Select Tile/Center option is set, files whose size is greater than or equal to 100,000 bytes will have the center attribute; those whose size is less than 100,000 bytes will have the tile attribute.

Files added in this way will be given the weight specified in the Auto Add Weight option. Setting this to a large value relative to the values of other wallpapers will make newly added wallpapers appear more frequently when using the Random or Random Cyclic selection methods; setting it to a small relative value will make newly added wallpapers appear less frequently; setting all wallpaper values to one will make them all appear with equal frequency. If you wish new wallpapers to be added to the wallpaper list but not appear until you choose them, set the Auto Add Weight value to zero, and they will not appear in automatic selection. See the topic Using Wallpaper Weighting in this section for more information.

Using Wallpaper Weighting

Weighting brings you additional flexibility and control of the frequency and selection of wallpapers to be displayed, and is one of **Wall-Ace**'s unique features. Each wallpaper in your wallpaper list may be assigned a specific weight, which will determine how often that wallpaper will be displayed relative to other wallpapers in the list, when using Random or Random Cyclic selection. Weighting has no effect in Sequential selection mode.

You set the weight for an individual wallpaper or a group of wallpapers by selecting those wallpapers in the Wallpaper File List in the Edit Wallpaper File List window, and either double-clicking in the list, or pressing the Weight command button. When wallpapers are added to the list, either by user command or by way of the Auto Add feature, they are initially given the weight specified in the Auto Add Weight option in the Auto Add Options panel of the Preferences window.

Weights may range from zero to 100. Setting a wallpaper's weight to a large value relative to the weighting of other wallpapers in the list, will cause that wallpaper to appear more frequently than wallpapers with lesser weighting, while setting a wallpaper's weight to a value lower than that of other wallpapers will cause it to appear less frequently than those with a greater weighting. To see exactly how this is done, see the discussion of the random selection modes in the topic Methods Of Selecting Wallpaper in this section.

Using this method, you can give your favorite wallpapers a large weighting to make them appear frequently, and give other wallpapers a lesser weighting to have them appear less often.

If you assign a weight of zero to a wallpaper, that wallpaper will never appear by automatic selection. This is useful if you are using the Auto Add feature and have files which you wish to keep in your wallpaper directory, but do not wish to have displayed. If you simply remove them from the wallpaper list, the Auto Add feature will cause them to be put back in the list the next time **Wall-Ace** is run. Instead, you can set their weight to zero, and while they will still be found in the list, they will no longer appear in automatic selection mode. In other words, wallpapers whose weight is zero will never be chosen by the Change button in the main window (or choosing Change Wallpaper from the File menu), or as a result of a timed change or the Change On Startup option. The only time they will be chosen is if they are directly selected in the Current Wallpaper list box in the main window.

Weighting affects the frequency of display of wallpapers only in Random or Random Cyclic selection mode, which occurs (if Random or Random Cyclic selection is set in Preferences) when the wallpaper is changed due to pressing the Change button in the main window (or choosing Change Wallpaper from the File menu), or as a result of a timed change or the Change On Startup option, but not as a result of a direct wallpaper selection in the Current Wallpaper list box in the main window. In particular, setting a wallpaper's weight to zero does not prevent it from being chosen in the Current Wallpaper list box, but selecting a wallpaper in the Current Wallpaper list box DOES cause its usage count to be updated.

Methods Of Selecting Wallpaper

Wall-Ace provides several ways to change wallpaper, and several methods of selecting which wallpapers to display, giving you a great deal of flexibility in deciding how and when wallpaper changes should occur.

The most direct method of changing the wallpaper is to choose a new wallpaper from the Current Wallpaper drop-down list in the main window. With this method, you directly select which wallpaper will be displayed.

Equally as easy, you can simply press the Change command button (or choose Change Wallpaper from the File menu) in the main window. Using this method, the wallpaper chosen will be determined by the selection method set in Preferences, as discussed below.

Perhaps the easiest way of changing the wallpaper is to let **Wall-Ace** do it for you automatically, either by having **Wall-Ace** change the wallpaper when it starts (see the topics The **Wall-Ace** Command Line, and Using The **Wall-Ace** General Options in this section), or by having **Wall-Ace** change the wallpaper at intervals (see the topic Using The Wallpaper Timer in this section). As in the case above, the wallpaper chosen in this case will be determined by the selection method set in Preferences.

The Selection Method panel in the Preferences window provides for having wallpapers chosen for display in different ways. The simplest of these is Sequential, in which the next wallpaper to be displayed is simply the one following the current wallpaper in the wallpaper list. When the end of the list is reached, the first wallpaper in the list is chosen again. Wallpapers whose weight is zero will not be selected.

In Random Cyclic selection, the list is also displayed in a cyclic fashion, but in random order, rather than sequentially. In addition, wallpapers may be displayed more than once in a single cycle, or not at all, depending on their weighting. In this mode, the length of a cycle is the sum of the weights of all the wallpapers in the list. At the beginning of the cycle, each wallpaper's usage count is set equal to its weight. Each time a new wallpaper is to be chosen, the usage counts of all wallpapers whose usage count is greater than zero is summed and a random number generated in that range. The chosen wallpaper's usage count is decremented, and when all wallpapers' usage counts are zero, the cycle is repeated.

In Random selection, the weights of all wallpapers whose weight is greater than zero is summed and a random number generated in that range. This mode yields a simple random selection, and like Random Cyclic, has a weighted distribution, i.e. wallpapers with greater weights have a greater probability of being selected. Unlike Random Cyclic, this mode is not cyclic in nature, since the random selection is based on the weights, which don't change with selection, rather than on the counts which do change with each selection. (The chosen wallpaper's count is decremented, but the counts are ignored in this selection mode.)

Using The Wallpaper Timer

The wallpaper timer is possibly one of the most frequently used features of **Wall-Ace**, perhaps because it contributes so much to the character of the program. After all, having your wallpaper changed periodically and fully automatically is not only the easiest way of changing wallpapers, and the most visible aspect of the program's operation, it also provides a pleasant distraction from the everyday work aspect of your computer's operation. In other words, it's just plain fun, especially if you have a good selection of attractive wallpapers!

In addition, it's very easy to use. In the Timer panel of Preferences, simply set the Timer Enabled option to true, and select the number of minutes you wish to elapse between wallpaper changes. The number of minutes may range from one to 32,767, or about 546 hours, which is a little more than 22 days. When you have it set to your liking, you may want to minimize the main window to have **Wall-Ace** run quietly in the background, changing your wallpaper for you just the way you have set it to.

Each time the selected time period has elapsed, **Wall-Ace** will select a new wallpaper according to the Selection Method set in Preferences, and reset the wallpaper timer to begin another period.

If you set the Cumulative Time option true, the time elapsed since the wallpaper was last changed is saved when **Wall-Ace** exits, and restored when **Wall-Ace** starts, thus allowing a time interval to be continued from one Windows session to the next. The first timed wallpaper change after **Wall-Ace** next starts will occur upon completion of the restored time interval. If the Cumulative Time option is false, the elapsed time is not saved or restored, and the first timed wallpaper change will occur one full time interval after **Wall-Ace** starts.

The Cumulative Time option will have no effect if the Change On Startup option is true, since the time interval restored by the Cumulative Time option will be immediately reset when the wallpaper is changed as a result of the Change On Startup option when **Wall-Ace** begins running.

Editing The Wallpaper List

Wall-Ace provides for easy editing of your wallpaper list in the Edit Wallpaper File List window, which is reached by pressing the File List command button in the main window, or the File List command button in the Preferences window.

The wallpaper list may contain wallpaper files which may reside in many different directories on your system. The Files panel displays all the bitmap (.bmp) files in a particular directory on your disk, which may be browsed in a manner similar to a standard Open File dialog. Any file or group of files (contiguous or not) in the Files panel may be selected for addition to the wallpaper list. Pressing the All command button will select all files in the Files panel. Once you have selected a file or files, pressing the Add command button or double-clicking in the File panel will add the selected files to the end of the wallpaper list.

In a similar manner, any file or group of files (contiguous or not) in the Wallpaper List panel may be selected for editing or removal. When a wallpaper file or files have been selected, pressing the Tile command button will give all the selected files the tile attribute, and pressing the Center command button will give all the selected files the center attribute. Pressing the Weight command button or double-clicking in the Wallpaper List panel will display the Edit Weight window, in which a new weight can be chosen, to be given to all selected wallpaper files. Pressing the Remove command button will remove any selected wallpapers from the list, after first asking for confirmation.

The Clear command button is available even when no wallpaper files have been selected. Pressing this button will remove ALL wallpapers from the list, after first ask for confirmation.

The Wall-Ace Initialization File

When **Wall-Ace** starts, it looks for its initialization file, wallace.ini, in the same directory from which it was run (the directory in which you placed the wallace.exe file). If it is not found there, **Wall-Ace** looks in your WINDOWS directory. If **Wall-Ace** cannot find its initialization file, it creates a new one with default values, in the directory from which it was run. This is the **ONLY** additional file that **Wall-Ace** will add to your system!

When creating its initialization file, **Wall-Ace** sets its wallpaper directory to your WINDOWS directory, and sets the Auto Add Enabled option to true by default (see the topic [Adding Wallpaper Files Automatically](#) in this section). Therefore, any bitmap (.bmp) files found in your WINDOWS directory will automatically be added to your wallpaper list. You may wish to change your wallpaper directory (see the topic [The Wallpaper Directory](#) in this section), or edit your wallpaper list (see the topic [Editing The Wallpaper List](#) in this section).

The Win.Ini File

When **Wall-Ace** starts, it determines the current wallpaper by examining your win.ini file. Whenever **Wall-Ace** changes your wallpaper, it updates the win.ini file. **Wall-Ace** always attempts to keep the win.ini file in sync with the actual state of the system. This is the ONLY change that **Wall-Ace** will make to your system files!

Registering Wall-Ace

To register **Wall-Ace**, first go to the [Registration](#) window. This window may be accessed by choosing Register **Wall-Ace**... from the Options menu in the main window, or by pressing the Register command button in either the About box or the startup splash screen.

In the Registration window, print the order form by pressing the Print Form command button. Complete and send the order form with the registration fee to the address shown on the order form.

When you receive your individual registration code, go to the Registration window, enter your Registration Name and Registration Code exactly as they were received, including case and punctuation, and press OK. You now have a registered version of **Wall-Ace**.

See the section [Registration And Benefits](#) for more information.

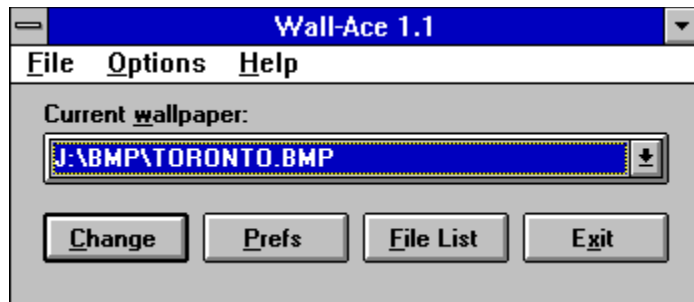
REFERENCE

This section provides a concise description of all **Wall-Ace** windows and the controls they contain. The topics in this section are:

- [The **Wall-Ace** Main Window](#)
- [The Preferences Window](#)
- [The Select Sound File Window](#)
- [The Edit Wallpaper File List Window](#)
- [The Select Wallpaper Directory Window](#)
- [The Edit Weight Window](#)
- [The About Window](#)
- [The Registration Window](#)

The Wall-Ace Main Window

Click on different areas in the graphic below for more information.



The main window contains the menu bar, a drop-down list box allowing convenient direct selection of any wallpaper in your list, and command buttons to quickly and easily change wallpaper, access the Preferences window, access the Edit Wallpaper File List window, and exit **Wall-Ace**. Each of these items is described below.

Menu Bar: the **Wall-Ace** menu bar contains the following menus:

File: the File menu has the following choices:

Change Wallpaper: immediately changes the wallpaper according the selection method set in Preferences, and resets the wallpaper timer. If the Exit After First Change option is set, **Wall-Ace** exits. This is the same as pressing the Change command button.

Exit: causes **Wall-Ace** to exit. The elapsed time in the current wallpaper timer interval, and the current window positions, are first saved to the initialization file, if selected in Preferences. This is the same as pressing the Exit command button.

Options: the Options menu has the following choices:

Preferences...: displays the Preferences window, from which all options may be set. This is the same as pressing the Preferences command button.

Edit Wallpaper File List...: displays the Edit Wallpaper File List window, from which the wallpaper list may be edited. This is the same as pressing the File List command button.

Help: the Help menu has the following choices:

Contents: displays the **Wall-Ace** help file at the Contents page.

Register **Wall-Ace**...: displays the Registration window.

About **Wall-Ace**...: displays the About **Wall-Ace** window.

Current Wallpaper: a drop-down list box which lists all the wallpapers currently defined in your wallpaper list. When **Wall-Ace** starts, the current Windows wallpaper, as reported by win.ini, is the current item in this box. Selecting an item in this box immediately changes your Windows wallpaper to the selected item, and resets the wallpaper timer. The first item in this box's list is '(None)'. Choosing this item will set the Windows wallpaper to None. The Exit After First Change option does not apply to direct selection via this list box, so **Wall-Ace** does not terminate.

Change: this command button immediately changes the wallpaper according the selection method set in Preferences, and resets the wallpaper timer. If the Exit After First Change option is set, **Wall-Ace** exits. This is the same as selecting Change Wallpaper from the File menu.

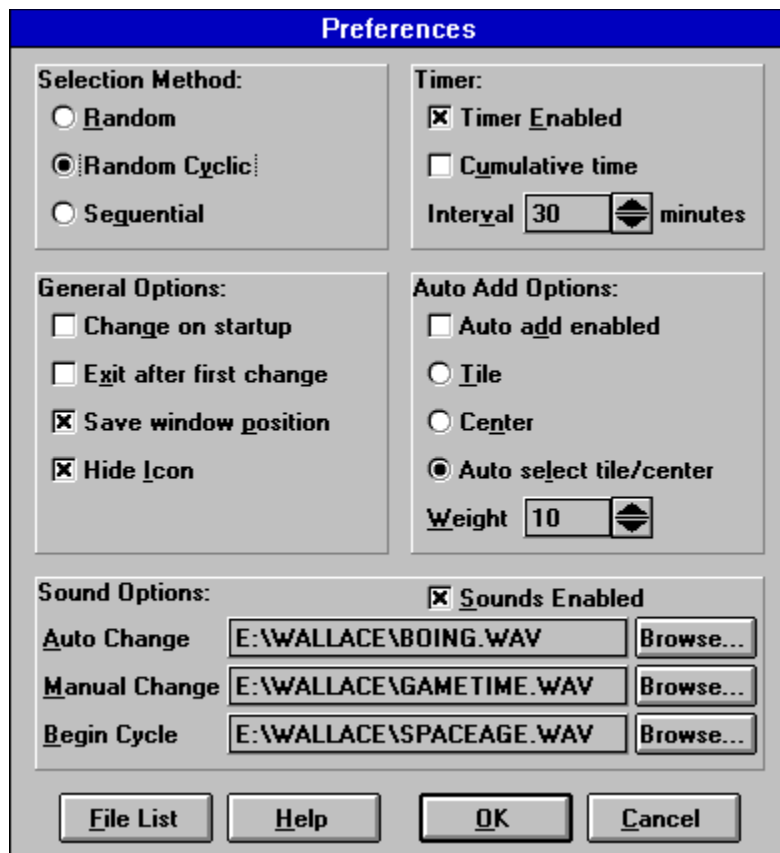
Preferences: this command button displays the Preferences window, from which all options may be set. This is the same as selecting Preferences... from the Option menu.

File List: this command button displays the Edit Wallpaper File List window, from which the wallpaper list may be edited. This is the same as selecting Edit Wallpaper File List... from the Option menu.

Exit: this command button causes **Wall-Ace** to exit. The accumulated time in the current wallpaper timer interval, and the current window positions, are first saved to the initialization file, if selected in Preferences. This is the same as selecting Exit from the File menu.

The Preferences Window

Click on different areas in the graphic below for more information.



The Preferences window contains the Selection Method panel, the General Options panel, the Timer panel, the Auto Add Options panel, the Sound Options panel, and command buttons to quickly access the Edit Wallpaper File List window, access the **Wall-Ace** on-line help, and exit the Preferences window. Each of these items is described below.

Selection Method: this panel allows setting the selection method, which may be one of the following:

Random: wallpapers are chosen randomly from the wallpaper list, with a weighted distribution based on each wallpaper's weight.

Random Cyclic: wallpapers are chosen randomly from the wallpaper list, with each being chosen the number of times indicated by its weight before the cycle is repeated.

Sequential: wallpapers are chosen sequentially through the wallpaper list, and the list is then repeated, without regard to wallpaper weight settings.

General Options: this panel allows setting the general options, which are described below:

Change on startup: if true, **Wall-Ace** will change the wallpaper according to the selection method specified in Preferences when it starts, in a manner identical to pressing the Change button in the main window. This option should not be used with the Exit After First Change option; see the topic Using The **Wall-Ace** General Options in the OPERATION section for more information.

Exit after first change: if true, **Wall-Ace** will exit immediately after changing the wallpaper either by pressing the Change button (or choosing Change Wallpaper from the File menu) in the main window, by a timed change, or by the Change On Startup option, but not by a direct wallpaper selection in the Current Wallpaper list box in the main window. Before exiting, **Wall-Ace** will save the wallpaper timer current interval's elapsed time, and the current window positions, if selected in Preferences. This option should not be used with the Change On Startup option; see the topic Using The **Wall-Ace** General Options in the OPERATION section for more information.

Save window positions: if true, **Wall-Ace** will save the current window positions when it exits, and will restore the saved positions when it starts.

Timer: this panel allows setting the timer options, as follows:

Enabled: if true, **Wall-Ace** will change the wallpaper at intervals of the selected length. If false, timed changes will not occur.

Cumulative time: if true, the time elapsed since the wallpaper was last changed is saved when **Wall-Ace** exits, and restored when **Wall-Ace** starts. The first timed wallpaper change after **Wall-Ace** next starts will occur upon completion of the saved time interval. If false, the elapsed time is not saved or restored, and the first timed wallpaper change will occur one full interval after **Wall-Ace** starts.

Note that if the Change On Startup option is true, the wallpaper will be changed and the timer reset when **Wall-Ace** starts, so the Cumulative Time option will have no effect.

Interval Minutes: specifies the number of minutes between timed wallpaper changes when the timer is enabled; the associated spinner provides for quick increases or decreases of the current time.

Auto Add Options: this panel allows setting the auto add options, which are described below:

Auto Add Enabled: if true, each time **Wall-Ace** starts it searches your wallpaper directory, and automatically adds to your wallpaper list any bitmap (.bmp) files which are not already in the list.

Tile: if true, wallpapers automatically added to the wallpaper list will have the tile attribute.

Center: if true, wallpapers automatically added to the wallpaper list will have the center attribute.

Auto Select Tile/Center: if true, each wallpaper automatically added to the wallpaper list will have the center attribute if its file size is greater than or equal to 100,000 bytes, and will have the tile attribute if its file size is less than 100,000 bytes.

Weight: specifies the weight given to each wallpaper automatically added to the wallpaper list; the associated spinner provides for quick increases or decreases of the current weight.

Sound File Options: this panel allows setting the sounds to be played when the wallpaper is changed, which are described below:

Sounds Enabled: if true, the specified sound file will be played each time the wallpaper is changed.

Auto Change: specifies the sound file to be played when the wallpaper is changed due to the Change On Startup option or as a result of a timed change.

Manual Change: specifies the sound file to be played when the wallpaper is changed by direct selection in the Current Wallpaper list box, by pressing the Change button, or by choosing Change Wallpaper from the File menu.

Begin Cycle: specifies the sound file to be played when a Sequential or Random Cyclic change begins a new cycle.

File List: this command button displays the Edit Wallpaper File List window, from which the wallpaper list may be edited.

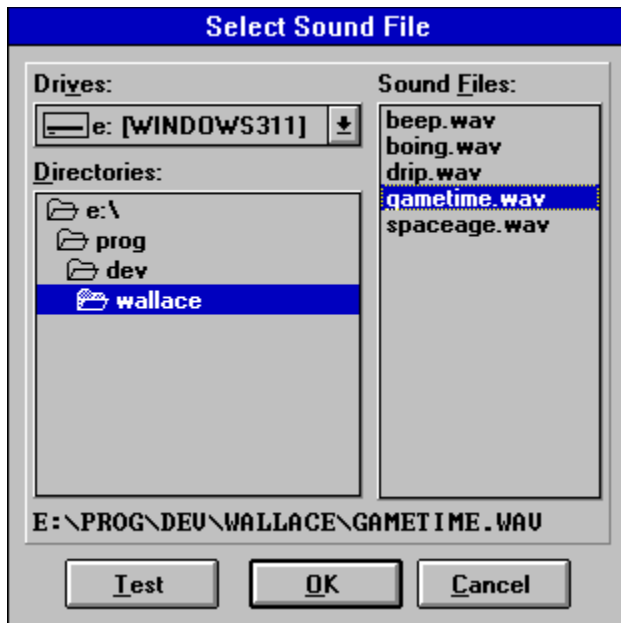
Help: this command button displays the **Wall-Ace** help file.

OK: this command button exits the Preferences window and causes all the Preferences to be saved in the initialization file, and used in the current session.

Cancel: this command button exits the Preferences window without saving any changes made, and without using any changes in the current session.

The Select Sound File Window

Click on different areas in the graphic below for more information.



The Select Sound File window contains the Files panel, and command buttons to exit the Select Sound File window. Each of these items is described below.

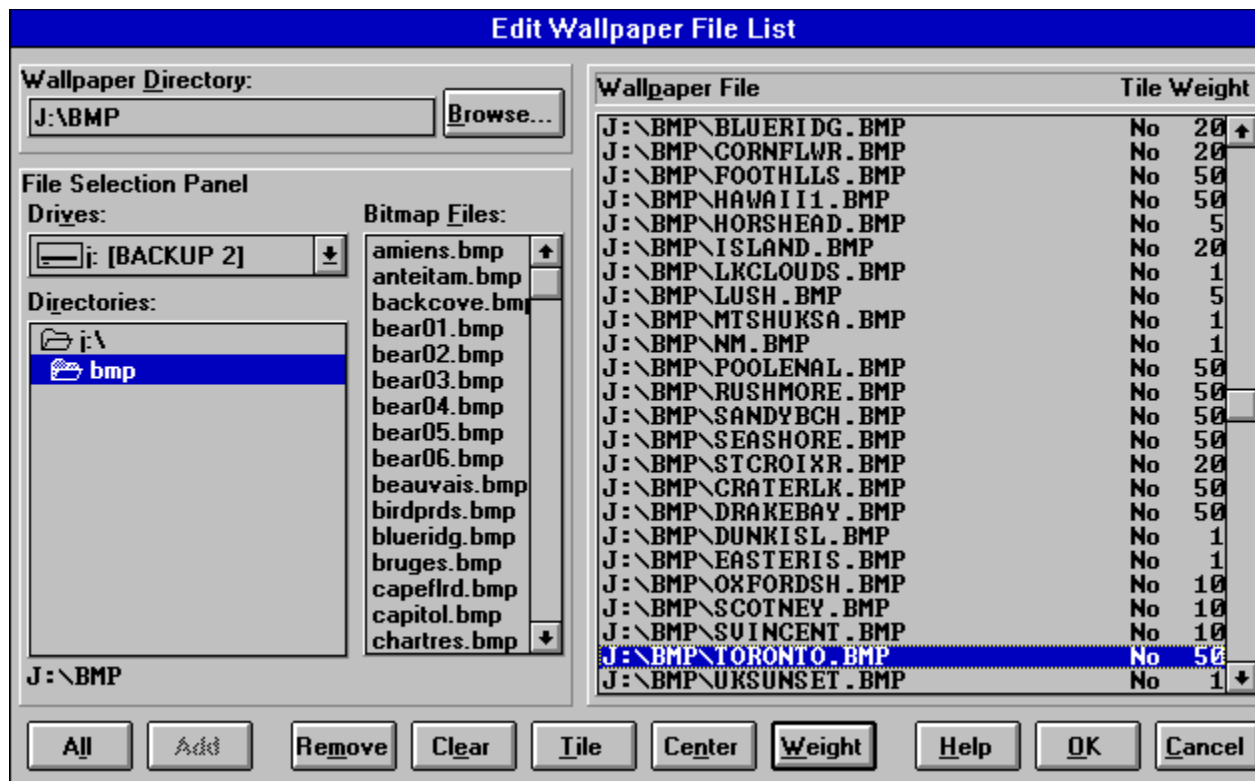
Files: this panel displays drives, directories, and sound (.wav) files, allowing the selection of the sound file to be used. It is similar to a standard file open dialog.

OK: this command button exits the Select Sound File window and causes the selected sound file to be used.

Cancel: this command button exits the Select Sound File window without changing the sound file.

The Edit Wallpaper File List Window

Click on different areas in the graphic below for more information.



The Edit Wallpaper File List window contains the Wallpaper Directory selection panel, the Files panel, the Wallpaper List panel, and command buttons to easily edit the wallpaper list, access the **Wall-Ace** on-line help, and exit the Edit Wallpaper File List window. Each of these items is described below.

Wallpaper Directory: this panel allows setting and viewing the wallpaper directory, and contains the following items:

Wallpaper Directory: this text box displays the current wallpaper directory, and allows directly entering a new directory path.

Browse: this command button displays the Select Wallpaper Directory window, from which a new wallpaper directory may be selected.

Files: this panel displays drives, directories, and bitmap (.bmp) files, and allows the selection of one or more files for addition to the wallpaper list. It is similar to a standard file open dialog.

Wallpaper List: this panel displays the wallpaper list, showing for each wallpaper the full path and filename, the tile/center attribute, and the weight, and allows selection of one or more wallpapers to edit. Double clicking is identical to pressing the Weight command button.

All: this command button selects all files in the Bitmap Files list box of the Files panel, for possible addition to the wallpaper list.

Add: this command button adds the files selected in the Bitmap Files list box of the Files panel to the wallpaper list. The added files' tile/center options and weights will be determined by the Auto Add Options selected in the Preferences window, in the same way as files automatically added, and may be further edited after addition.

Remove: this command button removes the files selected in the Wallpaper List panel from the wallpaper list, after prompting for confirmation.

Clear: this command button clears (removes ALL files from) the wallpaper list, after prompting for confirmation.

Tile: this command button causes all files selected in the Wallpaper List panel to be given the tile attribute.

Center: this command button causes all files selected in the Wallpaper List panel to be given the center attribute.

Weight: this command button displays the Edit Weight window, allowing the weight to be set for all files selected in the Wallpaper List panel.

Help: this command button displays the **Wall-Ace** help file.

OK: this command button exits the Edit Wallpaper File List window and causes the wallpaper list to be saved in the initialization file, and used by the current session.

Cancel: this command button exits the Edit Wallpaper File List window without saving any changes made, and without using any changes in the current session.

The Select Wallpaper Directory Window

Click on different areas in the graphic below for more information.



The Select Wallpaper Directory window contains the Files panel, and command buttons to exit the Select Wallpaper Directory window. Each of these items is described below.

Files: this panel displays drives, directories, and bitmap (.bmp) files, allowing the selection of the directory to be used as your wallpaper directory. It is similar to a standard file open dialog.

OK: this command button exits the Select Wallpaper Directory window and causes the selected directory to be displayed in the Wallpaper Directory text box of the Preferences window.

Cancel: this command button exits the Select Wallpaper Directory window without changing the contents of the Wallpaper Directory text box of the Preferences window.

The Edit Weight Window

Click on different areas in the graphic below for more information.



The Edit Weight window contains the Weight text box, and command buttons to exit the Edit Weight window. Each of these items is described below.

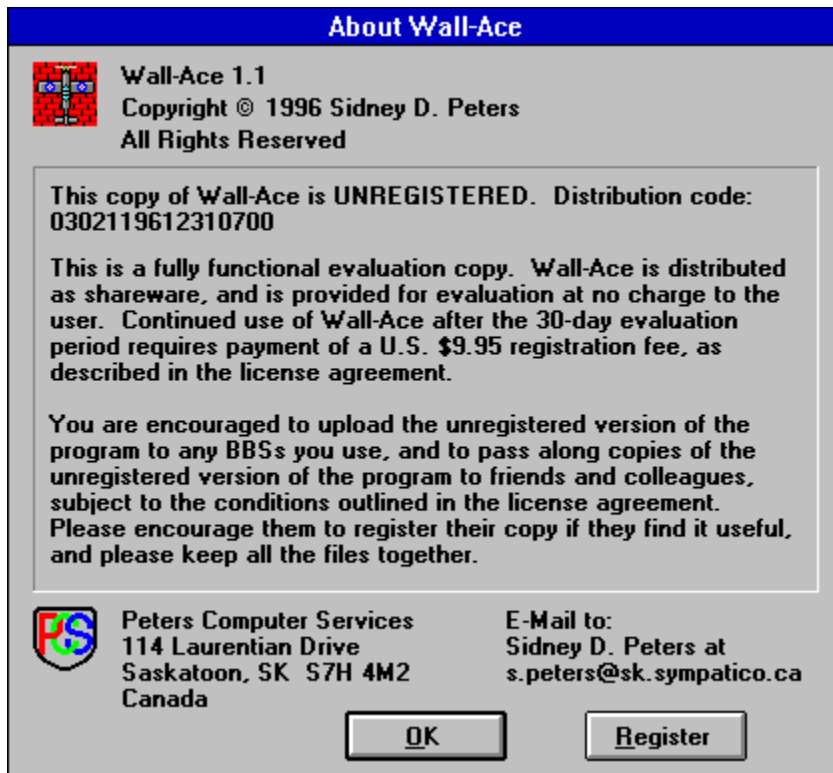
Weight: this text box allows direct entry of the weight to be used for all files selected in the Wallpaper List panel of the Edit Wallpaper File List window; the associated spinner provides for quick increases or decreases of the current weight.

OK: this command button exits the Edit Weight window and causes the specified weight to be used for all files selected in the Wallpaper List panel of the Edit Wallpaper File List window.

Cancel: this command button exits the Edit Weight window without changing the weights of the files selected in the Wallpaper List panel of the Edit Wallpaper File List window.

The About Window

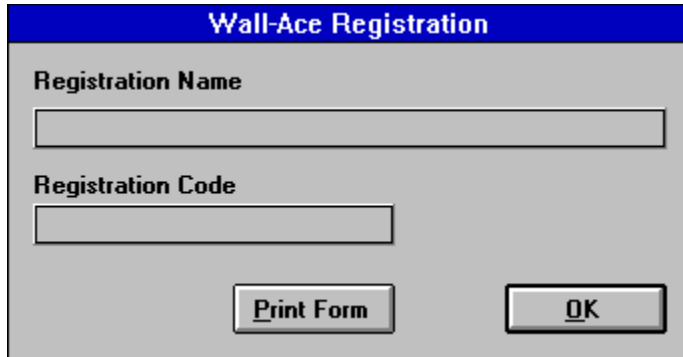
Click on different areas in the graphic below for more information.



The About window contains the copyright notice, registration and contact information, and command buttons to access the Registration window and to exit the About window.

The Registration Window

Click on different areas in the graphic below for more information.



The image shows a software window titled "Wall-Ace Registration". The window has a blue title bar. Inside, there are two text input fields: "Registration Name" and "Registration Code". Below these fields are two buttons: "Print Form" and "OK".

The Registration window contains the Registration Name and Registration Code text boxes to allow entering your registration data, and command buttons to print the order form and to exit the Registration window.

REVISION HISTORY

1.0 96/09/15 - first public release.

1.1 96/12/31.

- Added Hide Icon option to make icon invisible when **Wall-Ace** is minimized.
- All automatic selection methods now ignore wallpapers whose weight is zero.
- Random selection method renamed Random Cyclic, and new selection method named Random added.
- Random Cyclic selection method improved; now selects new wallpaper with a weighted distribution.
- Added ability to play user selected .wav sound files when the wallpaper is changed manually, when it is changed automatically, or when a new cycle begins.
- Wallpaper Directory selection panel moved from Preferences window to Edit Wallpaper File List window.
- Alt-hotkeys in Preferences window slightly modified to accomodate changes and additions.
- Added item titled '(None)' to the top of the list in the Current Wallpaper list box to allow setting the Windows wallpaper to none.
- If the current Windows wallpaper when **Wall-Ace** is started, as reported by win.ini, is not in the wallpaper list, it is now added to the end of the Current Wallpaper list box list and displayed in the Current Wallpaper list box.
- Previously, if the Wallpaper Directory was changed and then the Preferneces (now Edit Wallpaper File List) Cancel button was pressed, the Wallpaper Directory change was not cancelled, but remained in effect. Fixed.
- Previously, if **Wall-Ace** was minimized when exited, the main window position was incorrectly saved as the position of the minimized icon, and with Windows 95 caused an overflow error. Fixed.
- Since the wallace.txt file contained the same information as the wallace.hlp file, the text file has been removed and replaced by a readme.txt file.

WHY WALL-ACE?

There are several utilities available to change your Windows wallpaper, some of them quite good (and some not so good). Unfortunately, none of them had the feature set and ease of use we were looking for.

One of the best we have found, PaperChg is excellent in that it is small and unobtrusive, allows quick and easy direct selection of wallpapers, and functions well as a timed wallpaper changer. However, PaperChg does have a few shortcomings, which we have worked hard to address in **Wall-Ace**.

Firstly, in PaperChg you may have a custom list of wallpapers, or you may choose to have a wallpaper directory, but you cannot have both operational at the same time -- you must choose between them. Furthermore, if configured to use a wallpaper directory, PaperChg will choose from ALL wallpaper files in that directory, you cannot limit those with which you would like it to work. We feel it is much more convenient for you to be able to maintain a custom list of wallpapers from anywhere on your system, while still enjoying the benefits of a specific wallpaper directory, under your control.

Secondly, PaperChg and some others have options like Change On Startup and Exit After Change, but they have no way to consolidate the two operations into a single function. For example suppose you wish to have your utility start, change wallpaper and exit, each time Windows starts, but you would also like to be able to start your utility manually to change your wallpaper whenever you wish. Using the two options together will accomplish the first part. Unfortunately, this creates a problem of its own, as the author of PaperChg notes:

"If both options are enabled, then whenever PaperChg is run, [it] will immediately change your wallpaper and then quit. Because of this, if you decide you want to change any PaperChg setting, you will have to edit the PAPERCHG.INI file manually and either change the Change Wallpaper on Startup or Quit after First Wallpaper Change setting to No. A better solution" ... "will be a command line option."

Furthermore, the second requirement in the above example remains unaccounted for, since you cannot use the utility manually when it has both options set, due to this problem. The solution, as PaperChg's author notes, is a command line option, such as the **Wall-Ace** /q option.

Finally, a feature not available in PaperChg (and most others) which we feel is important is the availability of command buttons to accomplish tasks quickly and easily, especially those in the main window: Change, Prefs, File List and Exit, in much the same way as the Current Wallpaper drop-down list box makes direct selection of wallpapers very quick and easy.

One other point that's worth noting: PaperChg does not update your win.ini file after changing your wallpaper. There seems to be some difference of opinion on this, since about half of the utilities we have seen do update win.ini, and the rest do not. However, we feel it is best to keep win.ini in sync with the actual state of the system.

We hope you like the manner in which each of these issues has been addressed in **Wall-Ace**. Of course, there are also a host of additional features in **Wall-Ace**, many of which are not available anywhere else, which we believe set **Wall-Ace** head and shoulders above the rest.

CREDITS

Of all the paper changer utilities we looked at, some good and some bad, one of the very best available, in our opinion, is PaperChg 1.22 by Anthony J. Buchberger. PaperChg served as the inspiration for **Wall-Ace**, and we would like to extend our gratitude to Mr. Buchberger.

We would also like to thank all of our beta testers, especially Manfred Glombowski, Travis Kern, and Ted Slawinski, for their thorough, sometimes insightful, usually helpful :-), and always appreciated testing and comments.

Finally, I would like to thank my wife, Frances, both for her input, and for putting up with me (and my very late hours) during the development of **Wall-Ace**.

LICENSE AGREEMENT

YOU SHOULD CAREFULLY READ THE FOLLOWING TERMS AND CONDITIONS BEFORE USING THIS SOFTWARE.

Wall-Ace, its executable files, help files, documentation, and icon are Copyright 1996 by Sidney D. Peters. All Rights Reserved.

Unregistered Version

You are granted a limited license to use and evaluate this software for a period of 30 days, for the express purpose of determining whether this software is suitable for your needs. At the end of this period, you must either register this software or discontinue using it.

You are granted a limited license to distribute exact copies of the unregistered version of this software, provided that the entire product, including the executable files, help files, documentation, and icon, is distributed in its full and unmodified form, provided that no fee is charged other than a nominal distribution fee, and provided that the purchaser is informed in advance that the distribution fee does NOT relieve said purchaser from paying the registration fee for **Wall-Ace**.

Registered Version

A single user license permits a single registered copy of **Wall-Ace** to be used, EITHER by a single person who uses the software on one or more computers, provided that the software is not in use on more than one computer at the same time, OR on a single computer which is used by one or more persons, provided that the software is not in use by more than one person at the same time, BUT NOT BOTH. The registered version of **Wall-Ace** may be accessed through a network, provided that you have obtained a single user license for every computer that will access the software through the network.

The registered version of the software may not be distributed in any way, by any one other than the author or his authorized agent, without prior written consent from the author.

All Versions

Title to the software is NOT transferred to the end user or to any one else. Title to the software remains the property of the author.

DISCLAIMER OF WARRANTY

THIS SOFTWARE AND ACCOMPANYING DOCUMENTATION ARE PROVIDED "AS IS" AND WITHOUT WARRANTY OF ANY KIND, WHETHER EXPRESS OR IMPLIED, INCLUDING BUT NOT LIMITED TO ANY IMPLIED WARRANTIES OF MERCHANTABILITY AND FITNESS FOR A PARTICULAR PURPOSE. THE USER MUST ASSUME THE ENTIRE RISK OF USING THIS PRODUCT. IN NO EVENT SHALL SIDNEY D. PETERS BE HELD LIABLE FOR ANY DAMAGE, DIRECT OR CONSEQUENTIAL, RESULTING FROM THE USE OF THIS PRODUCT. USE OF THIS PRODUCT CONSTITUTES ACCEPTANCE OF THE TERMS OF THIS DISCLAIMER OF WARRANTY.

This license constitutes the complete and exclusive statement of license agreement for **Wall-Ace**, and supersedes any and all previous agreements, oral or written.

BY USING THE SOFTWARE YOU ACKNOWLEDGE THAT YOU HAVE READ AND UNDERSTAND THIS LICENSE, AND AGREE TO BE BOUND BY ITS TERMS AND CONDITIONS.

REGISTRATION AND BENEFITS

Wall-Ace is shareware and is provided for evaluation at no charge to the user. Feel free to pass along copies of the unregistered version of the program to friends and colleagues for evaluation. Please encourage them to register their copy if they find it useful. You are also encouraged to upload the unregistered version of the program to any BBSs you use. Please keep all the files together. All distribution is subject to the conditions outlined in the license agreement.

If you obtained **Wall-Ace** from a disk vendor, a bulletin board, internet archive site or on-line computer service, a friend or colleague, or another similar source, you have an unregistered (evaluation) copy. This is not a disabled or demo copy, but the complete working version of the program. Shareware authors believe that you should be able to evaluate a program in its actual operating environment on your own system, for a reasonable period of time, without cost. We believe that an important part of the shareware concept is that users must have a chance to fully test all parts of the software. You may try out the complete program at your own pace, and then decide if **Wall-Ace** is an application you want to continue using.

Retail software is too often overpriced. The essence of shareware is to provide users with quality software without high prices, and at the same time to provide the incentive for programmers to continue to develop new products. Although you may have paid a shareware or disk vendor a fee for the disk on which you obtained **Wall-Ace**, you should know the author receives none of that money. We believe that users are honest enough to register the program with the author. Your registrations provide the incentive and the means for us to continue to support our products, and to develop and distribute new products. If you don't think **Wall-Ace** is worth it, please send us mail (or e-mail) and tell us why -- perhaps your suggestions will be incorporated in a future version.

The evaluation copy of **Wall-Ace** will present a registration reminder screen each time **Wall-Ace** is started. When you register **Wall-Ace**, you will receive a registration key that is derived from the spelling of your name. This key will convert the evaluation copy of **Wall-Ace** into a registered copy without the reminder screen. In addition, your name will appear in the About box as the registered user of this copy of **Wall-Ace**. There is no fee for upgrades; your registration key will work for this and all future versions of **Wall-Ace**. You may obtain future versions of **Wall-Ace** from any of the sources mentioned above; you do not need a new diskette copy. If you prefer, you may receive new versions of **Wall-Ace** on disk, for only a disk shipping and handling fee.

The benefits of registration include:

- A registered copy of the latest version of **Wall-Ace**.
- Removal of the registration reminder screen.
- All future versions at no additional cost.
- Notification of updates and new products.
- Support via mail or e-mail.
- The legal right to continue to use the program after the evaluation period has ended.
- A clear conscience.
- A sense of pride and ownership, by having participated honestly in the shareware system.
- The satisfaction of helping to support the shareware system.
- Allows us to continue to support the program with additions, corrections, and enhancements.
- Your comments and ideas help shape the future direction of this and other products.
- As a bonus, you will receive a collection of beautiful full-screen wallpapers not available for download anywhere, either by e-mail at no cost, or on disk for just a disk shipping and handling fee.
- All of this, along with our gratitude.

To register your copy of **Wall-Ace**, print and complete the order form, and send the completed form with the registration fee, to the address shown on the order form.

The order form may be printed directly from **Wall-Ace**, by pressing the Print Form command button in the [Registration](#) window, which is accessed by choosing Options|Register **Wall-Ace**... in the main window, or by pressing the Register command button in either the [About](#) window or the startup splash screen.

Alternatively, the order form may be printed by copying the orderfrm.txt file to your printer with the DOS command:

copy orderfrm.txt prn:

A copy of the order form is presented below.

WALL-ACE ORDER FORM
Distribution 0302119612310101

	Quantity		Total
Wall-Ace Single User license only	_____	@ \$	9.95 _____
Wall-Ace Single User license with disk	_____	@ \$	15.95 _____
BONUS full-screen wallpaper disks	_____	@ \$	6.00 _____
Shipping & Handling outside North America (Europe \$8.00, Asia & Australia \$11.00)			_____
TOTAL (U.S. dollars)			_____

All amounts are in United States dollars. Payments may be made by cash, cheque, or money order, in any major world currency. Please make total amount equivalent to total U.S. dollar amount.

Contact the author for site licenses or other arrangements.

For license only shipping, please specify: e-mail post
License only orders will be sent by e-mail unless otherwise requested.

For license with disk shipping, please specify: 3 1/2" 5 1/4"
Disk orders will be sent on 3 1/2" disk unless otherwise requested.

Name Date

Title

Company

Street Address

City State/Province Zip/Postal Code

Country

Telephone (Day) (Evening) Fax

E-Mail Address

Please send payment with completed registration form to:

Sidney D. Peters
114 Laurentian Drive
Saskatoon, SK S7H 4M2
Canada

COMMENTS AND SUGGESTIONS

WALL-ACE COMMENTS AND SUGGESTIONS FORM
Distribution 0302119612310101

Please send us your comments, suggestions, bug reports, enhancement requests, or anything else you would like to mention about **Wall-Ace**. The questions are optional, and are for the purpose of helping us to improve our products and services, and to track their distribution.

Where did you obtain **Wall-Ace** from?

(Please specify name of site, service, bbs, distributor, book, etc.)

FTP or Web site On-line service BBS Other
 Shareware distributor Book or magazine Friend

Please specify: _____

How would you rate **Wall-Ace** in each of the following categories:

Ease of use _____
Features _____
Documentation _____
Overall quality _____
Suitability to task _____

What would you say is **Wall-Ace**'s best feature? Worst feature?

What would you say is **Wall-Ace**'s greatest strength? Greatest weakness?

What attracted you to **Wall-Ace**?

For what reasons do you/would you register shareware?

What do like most about shareware? Least?

What types of incentives do you like most?

What types of nags or other limitations do you like least?

What types of CPU do you use?

(check all that apply)

Pentium Pro
 Pentium
 486
 386
 286 or older

What types of OS software do you use?

(check all that apply)

Windows NT DOS
 Windows 95 Other _____
 Windows 3.x
 OS/2
 Linux/Unix

What types of shareware do you use? Are you interested in?

Other comments, suggestions, etc.: (use additional space if necessary)

CONTACTING THE AUTHOR

The author may be contacted by internet electronic-mail at:

s.peters@sk.sympatico.ca

or by postal mail at:

Sidney D. Peters
114 Laurentian Drive
Saskatoon, SK S7H 4M2
Canada

Menu Bar

The menu bar makes available the following menus:

File

Options

Help

File Menu

The File menu has the following choices:

Change Wallpaper: immediately changes the wallpaper according the selection method set in Preferences, and resets the wallpaper timer. If the Exit After First Change option is set, **Wall-Ace** exits. This is the same as pressing the Change command button.

Exit: causes **Wall-Ace** to exit. The elapsed time in the current wallpaper timer interval, and the current window positions, are first saved to the initialization file, if selected in Preferences. This is the same as pressing the Exit command button.

Options Menu

The Options menu has the following choices:

Preferences...: displays the Preferences window, from which all options may be set. This is the same as pressing the Preferences command button.

Edit Wallpaper File List...: displays the Edit Wallpaper File List window, from which the wallpaper list may be edited. This is the same as pressing the File List command button.

Help Menu

The Help menu has the following choices:

Contents: displays the **Wall-Ace** help file at the Contents page.

Register Wall-Ace...: displays the Registration window.

About Wall-Ace...: displays the About Wall-Ace window.

Current Wallpaper

A drop-down list box which lists all the wallpapers currently defined in your wallpaper list. When **Wall-Ace** starts, the current Windows wallpaper, as reported by win.ini, is the current item in this box, if it is in your wallpaper list. If the current wallpaper is not in your list, the box's current item is empty but the entire list is still available by dropping it down in this box. Selecting an item in this box immediately changes your Windows wallpaper to the selected item, and resets the wallpaper timer. The Exit After First Change option does not apply to direct selection via this list box, so **Wall-Ace** does not terminate.

Change Command Button

This command button immediately changes the wallpaper according the selection method set in Preferences, and resets the wallpaper timer. If the Exit After First Change option is set, **Wall-Ace** exits. This is the same as selecting Change Wallpaper from the File menu.

Prefs Command Button

This command button displays the Preferences window, from which all options may be set. This is the same as selecting Preferences... from the Option menu.

File List Command Button

This command button displays the Edit Wallpaper File List window, from which the wallpaper list may be edited. This is the same as selecting Edit Wallpaper File List... from the Option menu.

Exit Command Button

This command button causes **Wall-Ace** to exit. The accumulated time in the current wallpaper timer interval, and the current window positions, are first saved to the initialization file, if selected in Preferences. This is the same as selecting Exit from the File menu.

Selection Method Panel

This panel allows setting the selection method:

Random: wallpapers are chosen randomly from the wallpaper list, with each being chosen the number of times indicated by its weight before the cycle is repeated.

Sequential: wallpapers are chosen sequentially through the wallpaper list, and the list is then repeated, without regard to wallpaper weight settings.

General Options Panel

This panel allows setting the general options:

Change on startup: if true, **Wall-Ace** will change the wallpaper according to the selection method specified in Preferences when it starts, in a manner identical to pressing the Change button in the main window. This option should not be used with the Exit After First Change option; see the topic Using The **Wall-Ace** General Options in the OPERATION section for more information.

Exit after first change: if true, **Wall-Ace** will exit immediately after changing the wallpaper either by pressing the Change button (or choosing Change Wallpaper from the File menu) in the main window, by a timed change, or by the Change On Startup option, but not by a direct wallpaper selection in the Current Wallpaper list box in the main window. Before exiting, **Wall-Ace** will save the wallpaper timer current interval's elapsed time, and the current window positions, if selected in Preferences. This option should not be used with the Change On Startup option; see the topic Using The **Wall-Ace** General Options in the OPERATION section for more information.

Save window positions: if true, **Wall-Ace** will save the current window positions when it exits, and will restore the saved positions when it starts.

Timer Panel

This panel allows setting the [timer options](#):

Enabled: if true, **Wall-Ace** will change the wallpaper at intervals of the selected length. If false, timed changes will not occur.

Cumulative time: if true, the time elapsed since the wallpaper was last changed is saved when **Wall-Ace** exits, and restored when **Wall-Ace** starts. The first timed wallpaper change after **Wall-Ace** next starts will occur upon completion of the saved time interval. If false, the elapsed time is not saved or restored, and the first timed wallpaper change will occur one full interval after **Wall-Ace** starts.

Note that if the Change On Startup option is true, the wallpaper will be changed and the timer reset when **Wall-Ace** starts, so the Cumulative Time option will have no effect.

Interval Minutes: specifies the number of minutes between timed wallpaper changes when the timer is enabled; the associated spinner provides for quick increases or decreases of the current time.

Auto Add Options Panel

This panel allows setting the [auto add options](#):

Auto Add Enabled: if true, each time **Wall-Ace** starts it searches your wallpaper directory, and automatically adds to your wallpaper list any bitmap (.bmp) files which are not already in the list.

Tile: if true, wallpapers automatically added to the wallpaper list will have the tile attribute.

Center: if true, wallpapers automatically added to the wallpaper list will have the center attribute.

Auto Select Tile/Center: if true, each wallpaper automatically added to the wallpaper list will have the center attribute if its file size is greater than or equal to 100,000 bytes, and will have the tile attribute if its file size is less than 100,000 bytes.

Weight: specifies the weight given to each wallpaper automatically added to the wallpaper list; the associated spinner provides for quick increases or decreases of the current weight.

Sound Options Panel

This panel allows setting the sounds to be played when the wallpaper is changed:

Sounds Enabled: if true, the specified sound file will be played each time the wallpaper is changed.

Auto Change: specifies the sound file to be played when the wallpaper is changed due to the Change On Startup option or as a result of a timed change.

Manual Change: specifies the sound file to be played when the wallpaper is changed by direct selection in the Current Wallpaper list box, by pressing the Change button, or by choosing Change Wallpaper from the File menu.

Begin Cycle: specifies the sound file to be played when a Sequential or Random Cyclic change begins a new cycle.

File List Command Button

This command button displays the Edit Wallpaper File List window, from which the wallpaper list may be edited. This is the same as the File List command button in the main window.

Help Command Button

This command button displays the **Wall-Ace** help file.

OK Command Button

This command button exits the Preferences window and causes all the Preferences to be saved in the initialization file, and used in the current session.

Cancel Command Button

This command button exits the Preferences window without saving any changes made, and without using any changes in the current session.

Drive Panel

This panel displays the currently selected drive, and allows selection of the drive for the sound file.

Directory Panel

This panel displays the currently selected directory on the currently selected drive, and allows selection of the sound file directory on that drive.

Sound File Panel

This panel displays all the sound (.wav) files in the currently selected directory of the currently selected drive. A file may be immediately played by double clicking, or by selecting the file and pressing the Test command button.

Current File Panel

This panel displays the currently selected drive, directory and sound file.

Test Command Button

This command button plays the selected sound file immediately.

OK Command Button

This command button exits the Select Sound File window and causes the selected sound file to be used.

Cancel Command Button

This command button exits the Select Sound File window without changing the sound file.

Wallpaper Directory Panel

This panel allows setting and viewing the wallpaper directory.

Wallpaper Directory: this text box displays the current wallpaper directory, and allows directly entering a new directory path.

Browse: this command button displays the Select Wallpaper Directory window, from which a new wallpaper directory may be selected.

Drive Panel

This panel displays the currently selected drive, and allows selection of the source drive for wallpaper files to add to the wallpaper list.

Directory Panel

This panel displays the currently selected directory on the currently selected drive, and allows selection of the source directory on that drive for wallpaper files to add to the wallpaper list.

Bitmap File Panel

This panel displays all the bitmap (.bmp) files available for addition to the wallpaper list, in the currently selected directory of the currently selected drive.

Current Directory Panel

This panel displays the currently selected drive and directory.

Wallpaper Panel

This panel displays the wallpaper list, showing for each wallpaper the full path and filename, the tile/center attribute, and the weight, and allows selection of one or more wallpapers to edit. Double clicking is identical to pressing the Weight command button.

All Command Button

This command button selects all files in the Bitmap Files list box of the Files panel, for possible addition to the wallpaper list.

Add Command Button

This command button adds the files selected in the Bitmap Files list box of the Files panel to the wallpaper list. The added files' tile/center options and weights will be determined by the Auto Add Options selected in the Preferences window, in the same way as files automatically added, and may be further edited after addition.

Remove Command Button

This command button removes the files selected in the Wallpaper List panel from the wallpaper list, after prompting for confirmation.

Clear Command Button

This command button clears (removes ALL files from) the wallpaper list, after prompting for confirmation.

Tile Command Button

This command button causes all files selected in the Wallpaper List panel to be given the tile attribute.

Center Command Button

This command button causes all files selected in the Wallpaper List panel to be given the center attribute.

Weight Command Button

This command button displays the Edit Weight window, allowing the weight to be set for all files selected in the Wallpaper List panel.

Help Command Button

This command button displays the **Wall-Ace** help file.

OK Command Button

This command button exits the Edit Wallpaper File List window and causes the wallpaper list to be saved in the initialization file, and used by the current session.

Cancel Command Button

This command button exits the Edit Wallpaper File List window without saving any changes made, and without using any changes in the current session.

Drive Panel

This panel displays the currently selected drive, and allows selection of the drive for the wallpaper directory.

Directory Panel

This panel displays the currently selected directory on the currently selected drive, and allows selection of the wallpaper directory on that drive.

Bitmap File Panel

This panel displays all the bitmap (.bmp) files in the currently selected directory of the currently selected drive.

Current Directory Panel

This panel displays the currently selected drive and directory.

OK Command Button

This command button exits the Select Wallpaper Directory window and causes the selected directory to be displayed in the Wallpaper Directory text box of the Preferences window.

Cancel Command Button

This command button exits the Select Wallpaper Directory window without changing the contents of the Wallpaper Directory text box of the Preferences window.

Weight Panel

This text box allows direct entry of the weight to be used for all files selected in the Wallpaper List panel of the Edit Wallpaper File List window; the associated spinner provides for quick increases or decreases of the current weight.

OK Command Button

This command button exits the Edit Weight window and causes the specified weight to be used for all files selected in the Wallpaper List panel of the Edit Wallpaper File List window.

Cancel Command Button

This command button exits the Edit Weight window without changing the weights of the files selected in the Wallpaper List panel of the Edit Wallpaper File List window.

Copyright Panel

This panel displays the program version and copyright.

About Panel

This panel displays the program registration information.

Author Post Panel

This panel displays the author's postal address.

Author E-Mail Panel

This panel displays the author's e-mail address.

OK Command Button

This command button exits the About window.

Register Command Button

This command button displays the Registration window, from which you can print the registration form, or enter your registration code to register your copy of **Wall-Ace**.

Registration Name Panel

Enter your registration name in this panel to register your copy of **Wall-Ace**.

Registration Code Panel

Enter your registration code in this panel to register your copy of **Wall-Ace**.

Print Form Command Button

This command button will print the **Wall-Ace** [registration form](#) and [comments form](#), which are used to register your copy of **Wall-Ace**.

OK Command Button

This command button exits the Registration window.

